

Oilgear

PRODUCT REFERENCE GUIDE



PERFORMANCE ASSURANCE – STANDARD WITH EVERY OILGEAR COMPONENT

Every Oilgear product is shipped to you with our Performance Assurance — a corporate commitment to stay with your installation until our equipment performs as specified.

Hydraulic equipment and systems have been Oilgear's primary business since 1921. For decades, we have developed hydraulic techniques to meet the unique needs and unusual fluid power problems of machinery builders and users worldwide, matching fluid power systems to a tremendous range of applications and industries. Our exclusive Performance Assurance program is built upon that strong foundation.

As a customer, you also benefit from access to Oilgear's impressive technical support network. You'll find factory trained and field-experienced application engineers on staff at every Oilgear facility. They are backed by headquarters staff who can access the records and knowledge learned from decades of solving the most difficult hydraulic challenges.

When your design or purchase is complete, our service is just beginning. If you ever need us, our Oilgear engineers will be there, ready to help you with the education, field service, parts and repairs to assure that your installation runs smoothly — and keeps right on running.



Variable Pumps



PVG — Axial Piston Pump 4 Displacements

Maximum Pressure: 400 bar
 Displacement: 65 to 130 cm³
 Rated RPM: 2750 rpm
 Mounting Configuration: SAE "B", "C" 2 and 4 Bolt Flange Mount
 Bulletin Number: 47019



PVV — Axial Piston Pump 4 Displacements

Maximum Pressure: 500 bar
 Displacement: 200 to 540 cm³
 Rated RPM: 2200 rpm
 Mounting Configuration: ISO 200 and 250 4 Bolt Flange Mount
 Bulletin Number: 47028

Fixed Pumps



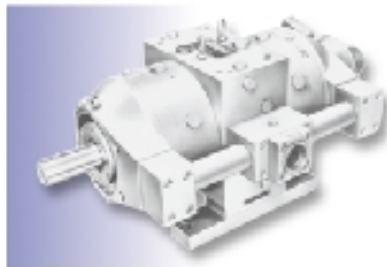
PFBA — Check Valve Pump 6 Displacements

Maximum Pressure: 1000 bar
 Displacement: 4,5 to 22,50 cm³
 Rated RPM: 1800 rpm
 Mounting Configuration: Foot or Face Mount
 Bulletin Number: 46005



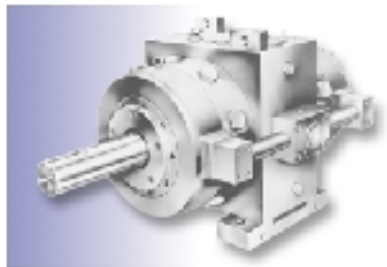
PFBK — Check Valve Pump 4 Displacements

Maximum Pressure: 1000 bar
 Displacement: 33 to 65 cm³
 Rated RPM: 1800 rpm
 Mounting Configuration: Foot or Face Mount
 Bulletin Number: 46005



PFCM — Check Valve Pump 4 Displacements

Maximum Pressure: 1000 psi
 Displacement: 66 to 130 cm³
 Rated RPM: 1800 rpm
 Mounting Configuration: Foot or Face Mount
 Bulletin Number: 46005



PFCS — Check Valve Pump 2 Displacements

Maximum Pressure: 690 bar
 Displacement: 440 to 580 cm³
 Rated RPM: 1800 rpm
 Mounting Configuration: Foot or Face Mount
 Bulletin Number: 46005

Motors



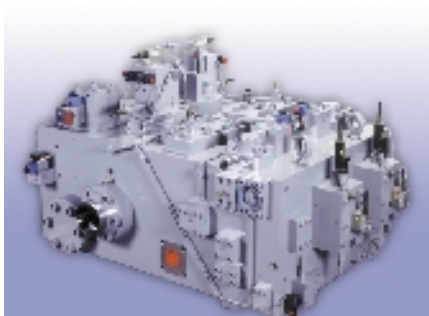
MVQ Variable Axial Piston Motor 4 Displacements

Maximum Pressure:	310 bar
Displacement:	14 to 47 cm ³
Rated RPM:	100 to 3000 rpm
Mounting Configuration:	SAE "A" and "B" 2 Bolt Flange Mount
Bulletin Number:	57015



MFQ Fixed Axial Piston Motor 4 Displacements

Maximum Pressure:	310 bar
Displacement:	14 to 47 cm ³
Rated RPM:	100 to 3000 rpm
Mounting Configuration:	SAE "A" and "B" 2 Bolt Flange Mount
Bulletin Number:	57015



Manifolds

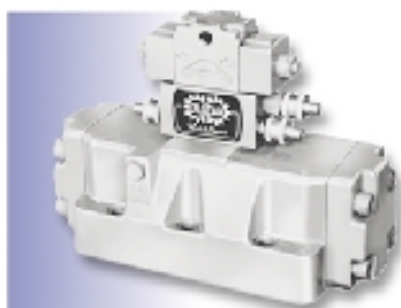
Oilgear modular and integrated manifolds simplify maintenance and reduce fluid leakage. Modular type manifolds can be stacked horizontally or vertically to satisfy circuit needs. For more demanding applications, Oilgear high strength steel integrated manifolds withstand extreme operating pressure and allow higher throughput rates with minimal pressure drops.

Electronics

Oilgear offers a wide range of standardized electronic control modules for specialized electrohydraulic control applications. These standard modules may be combined, using a building block approach, into "customized" application control systems. Solid state I.C. construction gives you high reliability and long service performance. An optional mini rack featuring back plane wiring and extender cards ensures easy servicing of all control modules.



Directional Valves



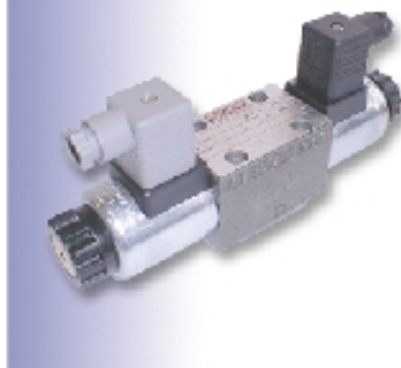
VDC Directional Valve

General Description: Subplate Mounted.
3 and 4-way.
3 Sizes: ranging from 1 to 3 inches.

GPM: 2340 l/min Δ 6,9 bar

PSI: 345 bar

Bulletin Number: 80305



WE Directional Valve

General Description: Subplate Mounted.
3 and 4-way.
4 Sizes: ranging from 1/4 to 3/4 inches.

GPM: 390 l/min Δ 6,9 bar

PSI: 345 bar

Bulletin Number: 80340 and 80349

Cartridge Valves



SLIP-IN Cartridge Valve

General Description: 6 Sizes for a variety of Pressure and Flow Applications.

GPM: 3300 l/min Δ 6,9 bar

PSI: 345 bar

Bulletin Number: 80001

SCREW-IN Cartridge Valve

General Description: 5 Sizes for a variety of Pressure and Flow Applications.

GPM: 1130 l/min Δ 6,9 bar

PSI: 345 bar

Bulletin Number: 80001

Servo Valves



VBP Servo Valve

General Description: Servo Controlled Cartridge Valve with LVDT feedback.
6 Sizes Available.

GPM: 3000 l/min Δ 6,9 bar

PSI: 345 bar

Bulletin Number: Contact Factory

SCVS Servo Valve

General Description: 3-way.
5 Sizes Available.
2 Stage.

GPM: 1040 l/min Δ 69 bar

PSI: 345 bar

Bulletin Number: 36110

Prefill Valves



VPE Prefill Valve

General Description: 2-way.
8 Sizes Available.

GPM: 49200 l/min 3,4 bar Head Loss

PSI: 1000 bar

Bulletin Number: 86000

VSA Prefill Valve

General Description: 3-way.
4 Sizes Available.

GPM: 9460 l/min 0,07 bar Head Loss

PSI: 345 bar

Bulletin Number: 86000

Oilgear

World Headquarters The Oilgear Company

2300 South 51st Street Milwaukee, WI USA 53219
phone: 414/327-1700 fax: 414/327-0532

www.oilgear.com

For more information about your application or the products in this brochure, please contact your nearest Oilgear facility.



AUSTRALIA

Oilgear Towler Australia Pty. Ltd.

BRAZIL

Oilgeardo Brazil Hydraulica Ltd.

CANADA

The Oilgear Company

FRANCE

Oilgear Towler S.A.

GERMANY

Oilgear Towler GmbH

INDIA

Oilgear Towler Polyhydron Pvt. Ltd.
Towler Automation Pvt. Ltd.

ITALY

Oilgear Towler S.r.l.

JAPAN

The Oilgear Japan Company

KOREA

Oilgear Towler Korea Co. Ltd.

MEXICO

Oilgear Mexicana S.A. de C.V.

SPAIN

Oilgear Towler S.A.

TAIWAN

Oilgear Towler Taiwan Co. Ltd.

UNITED KINGDOM

Oilgear Towler Ltd.

UNITED STATES OF AMERICA

The Oilgear Company

